

Architectural Series

100W Fresnel, PC

(ver. 2021/04)



SOURCE

- 100W LED COB
- Source life expectancy: > 50.000 h
- Note: for Luminous flux and Colour rendering refer to the table at the end of this document

CONTROL

- Protocols: DMX512, RDM (DALI optional)
- Local potentiometer
- Reversible graphics display with standby-shutdown function

	DMX Channels
WHITE	1 / 2 / 3 ch

OPTICS

- 120mm High-quality glass lens optics
- Focus: manual
- Note: for Beam angles refer to the table at the end of this document

HOUSING

- Highly resistant body in extruded aluminum
- Finishing: Black
- IP 20

CONNECTION

- Power connector: Chassis PowerCON In/Out
- Additional cable: 2m H05RN-F cable with powerCON female cable connector
- DMX: XLR 5-pole In/Out panel connectors

COMPLIANCE

- CE
- EN 60598-1; EN 60598-2-17
- SSL Licensing Program
- Manufactured in Italy with Quality System ISO 9001:2015

DMX chart

		WHITE		
		1CH	2CH	3CH
		8 BIT	8 BIT	16 BIT
1 ch	DIMMER		DIMMER	DIMMER
2 ch			STROBO	DIMMER FINE
3 ch				STROBO

SOFTWARE FUNCTIONS

- ESD: 8 or 16bit extra soft dimming
- 2 selectable dimmer curves
- Adjustable delay in turning on and off
- PWM LED 500Hz-20KHz
- Led boost
- Storage and factory recovery
- Upgradable Firmware via DMX/USB tool

THERMAL MANAGEMENT

- Wide ventilation slots for better LED cooling with selectable fan speed in: "standard", "silent" and "auto" or DMX regulated
- High efficiency heat pipe cooling system
- No heat load from LED engine towards electronic and vice-versa avoiding the risk of failure due to overheating
- Ta max 40°C

ELECTRICAL

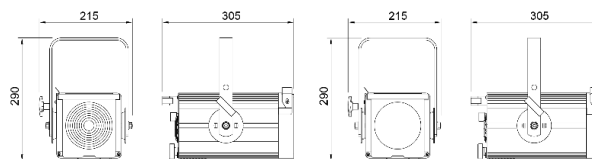
- Power supply: 100-240 V – 50/60 Hz
- Power consumption: 100 W
- PF>0.94/230VAC PF>0.98/115VAC at full load

OPTIONS

- Pole Operated Yokes
- ARC Motorized Yokes DMX 512

DIMENSIONS

FN	3.5 Kg	290*215*305 mm
PC	3.0 Kg	290*215*305 mm



Architectural Series

100W Fresnel, PC

(ver. 2021/04)



Model	Type	CT	(measure at)	CRI	TLCI	TM-30	Lumen	Beam	Lux	Ø Beam	Lux	Ø Beam	Lux	Ø Beam	Lux	Ø Beam	Lux	Ø Beam
FN LED C100	WW	3000K	3000K	97			6.223	12°	1.073	0,8	477	1,3	268	1,7	172	2,1	119	2,5
								75°	280	6,1	124	9,1	70	12,2	45	15,2	31	18,2
	NW	4000K	4000K	97			6.572	12°	1.133	0,8	503	1,3	283	1,7	181	2,1	126	2,5
								75°	296	6,1	131	9,1	74	12,2	47	15,2	33	18,2
	CW	5600K	5600K	97			7.667	12°	1.321	0,8	587	1,3	330	1,7	211	2,1	147	2,5
								75°	345	6,1	153	9,1	86	12,2	55	15,2	38	18,2
									4 m		6 m		8 m		10 m		12 m	

Model	Type	CT	(measure at)	CRI	TLCI	TM-30	Lumen	Beam	Lux	Ø Beam	Lux	Ø Beam	Lux	Ø Beam	Lux	Ø Beam	Lux	Ø Beam
PC LED C100	WW	3000K	3000K	97	97	94	6.208	15°	1.044	1,0	464	1,6	261	2,1	167	2,6	116	3,1
								75°	274	6,1	122	9,1	68	12,2	44	15,2	30	18,2
	NW	4000K	4000K	97	97	94	6.556	15°	1.102	1,0	490	1,6	276	2,1	176	2,6	122	3,1
								75°	289	6,1	128	9,1	72	12,2	46	15,2	32	18,2
	CW	5600K	5600K	97	97	94	7.648	15°	1.286	1,0	572	1,6	321	2,1	206	2,6	143	3,1
								75°	337	6,1	150	9,1	84	12,2	54	15,2	37	18,2
									4 m		6 m		8 m		10 m		12 m	